

Waukee Family YMCA

YMCA of Greater Des Moines



YSTRONG FUTURES
Preparing for the Next Generation

Waukee Family YMCA

Opened in 2001 as a collaboration with Waukee Community Schools, the Waukee Family YMCA has grown at an incredible rate. It serves more than 7,000 members, far exceeding the capacity of the current facility.

“Waukee is one of the fastest growing communities in the country, adding 1,000 residents annually. Expanding this YMCA helps to make Waukee a more attractive option for the businesses and families who reside here, or for those who are considering becoming part of our community.”

Bill Peard, Waukee Mayor

With the clear demand for services and committed volunteer leadership, the Waukee Family YMCA is ready to grow. The gift of an ideally-situated parcel of land has given us the jump start we need to begin the process of building a new facility.

The new Waukee Family YMCA will serve more children and teens, with programs that confront youth obesity, keep kids safe and teach young people to be leaders. Adults and seniors will have a place to take care of their health and give back to the community as volunteers. Businesses will be able to work with the YMCA to offer health and wellness services to their employees.

As Waukee moves into the future, the YMCA will continue to be part of the fantastic growth of this community.



Waukee Population Growth

2000	2006	% Growth
5,126	10,950	114%

Source: Des Moines Register, June 28, 2007.



Building Strong Kids, Strong Families, and Strong Communities... Through A New Vision and Enduring Values

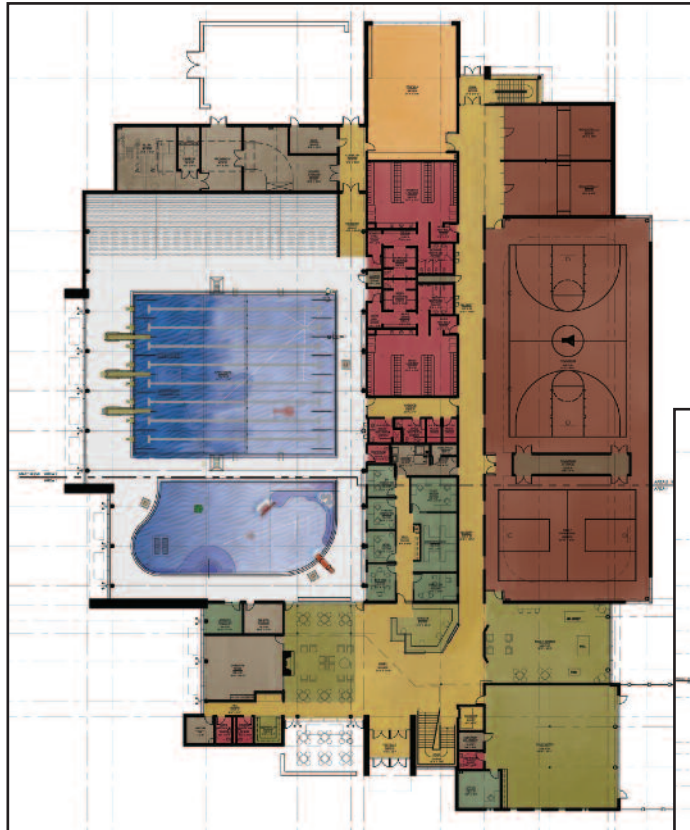
dmyymca.org

Waukee Family YMCA

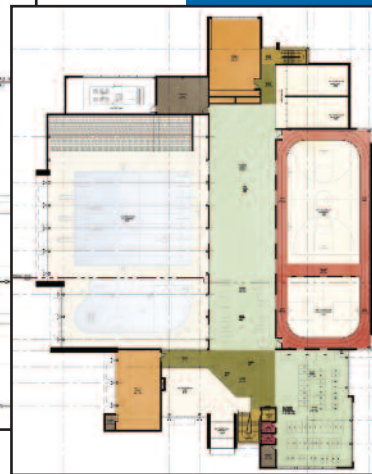
YMCA of Greater Des Moines



YSTRONG FUTURES
Preparing for the Next Generation



Main Floor



Second Floor

Facility Features*

- Gymnasium
- Family Aquatic Center
- Family Center
- Kids' Zone
- Fitness Center (cardio and strength)
- Racquetball

Serving the Community

On the average, 560 people walk through the doors each day in Waukee. Last year we served 24,282 in aerobics class, 3,774 in youth sports, 267 in child care, 2,517 in swim lessons, 140 children on swim team, 3,000 in day camp, and 100 in academic preschool just to name a few of our most popular programs.

2008 Financial Assistance

- Youth Programs \$9,958
- Child Care/Preschool Camps \$80,569
- Membership \$100,116

"The Waukee community and the Waukee School District continue to grow at an exceptional rate. That growth necessitates facilities expansion across the community to meet the educational and recreational needs and expectations of the families we support."

Dave Wilkerson, Waukee Schools Superintendent

